



**WILLESBOROUGH**  
**BAPTIST CHURCH**

# Welcome

**Sunday, 7<sup>th</sup> July 2019**

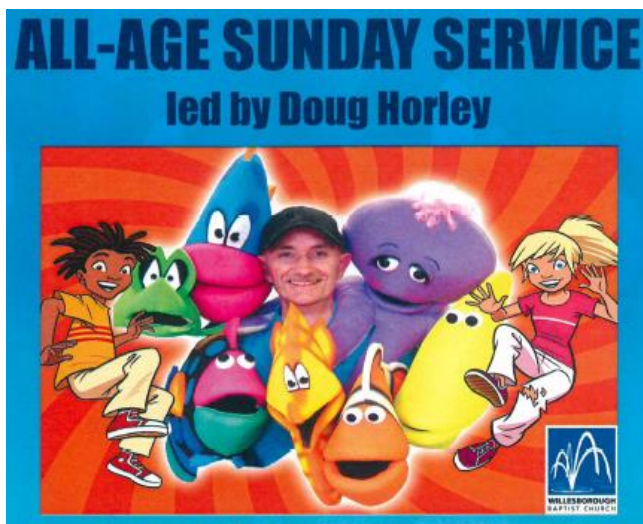
**Morning Service**

**10am**

**Worship led by Seona Casse and  
Pastor Daniel Ispas preaching**

**Invincible Joy  
John 15:11**

**Next Week:**



If you are a visitor, we especially welcome you, please do pick up an information pack, join us for coffee after the service and make yourself known to our

**Duty Leader: Robin Wise**

---

## Church Diary

<b>Monday</b>	<b>8.30am-4pm</b>	<b>Pre-School</b>
<b>Tuesday</b>	<b>9-11am 10am 6.30pm</b>	<b>Pebbles Natters Coffee Tuesday Club</b>
<b>Wednesday</b>	<b>8.30am-4pm 6.30pm 7pm</b>	<b>Pre-School Willesborough Community Forum Pilgrims Progress (see Notices)</b>
<b>Thursday</b>	<b>8.30am-4pm 7.45pm</b>	<b>Pre-School Worship Group</b>
<b>Friday</b>	<b>8.30am-4pm 10.30am</b>	<b>Pre-School Friday Morning Prayer Group</b>
<b>Saturday</b>	<b>8am 3-5.15pm</b>	<b>Men's Breakfast (see Notices) Messy Church</b>
<b>Sunday</b>	<b>10.00am</b>	<b>All Age Service led by Doug Horley</b>



**Refreshments next week: Libby's group**

### IN THE EVENT OF A FIRE

**leave the building through the nearest Fire Exit and immediately make your way to the assembly point outside the Windmill Inn**

**From the Main Church:**

Exit into the side car park via the Fire Exit near the PA desk at the rear of main church;

**OR** go along the corridor at the front left of main church, past the offices, through the "Prayer Room" Fire Exit into the play area at the back of the building;

**OR** use main church entrance

**Children and youth** will be escorted directly out of the building via their nearest exit by their teachers and led safely to the Assembly Point

**From Natters**, use the Fire Doors at the front of Natters, near to the main road.

## Church Notices

**CAR PARK** – there are several loose slates on the roof so for your safety and the protection of your cars, we have coned off those spaces. We apologise for the inconvenience, hopefully it will be resolved soon.

- **LECTURN** – you will notice this morning a new lectern on the platform. This has been generously made and given to WBC by Pastor Daniel Ispas (Danny's father) on behalf of Community Action Romania as a thank you for all your help given over the last few years. This gives those preaching different options if wanted.
- **PILGRIMS PROGRESS – alternate Wednesdays (term time only) – 7-8.30pm – at WBC – for 9-17-year olds** – to encourage young people to expand their abilities in worship, music, studying the Bible, public speaking and preaching.
- **MEN'S BREAKFAST** – Last chance to sign up - Next Saturday 13th July at WBC. Our speaker for this event is Pastor Daniel Ispas from Community Action Romania. Start time is 8am for 8.15am. Please sign up on the sheet on the notice board.
- **CHARIS STEELE** – Charis is being baptised next Sunday, 14<sup>th</sup>, at St Mary's Bay (TN29 0SW). If you would like to come along, please meet there at 2pm.
- **ALAN'S LAST MESSAGE** is available on the website or to download from You Tube.
- **NEW LANDLINE NUMBER** for Alan and Barbara – ask office for details.
- **LORRAINE STAFFORD** has moved.
- **'THE TIMES THEY ARE A CHANGIN'!** - nothing happens at WBC without you! We rely on our church family to prayerfully consider how you might feel called to serve. We need volunteers! Volunteers for refreshments, volunteers to open up the building occasionally, volunteers to help with cleaning (when Jo is away), small DIY/maintenance issues (eg cleaning heater filters), light gardening, to name a few. Please contact the Office if you can help.

### Preachers during:

July:

14<sup>th</sup> July – Doug Horley

21<sup>st</sup> July – Keith Gwilym

28<sup>th</sup> July – Andy Milligan (Mission India)

August:

4<sup>th</sup> August – Roger Edwards

11<sup>th</sup> August – Mike Burgess

18<sup>th</sup> August – Philip O'Connor (Communion)

25<sup>th</sup> August – Rev. Mark Hirst

# Who we are

## OUR PURPOSE:

We are a passionately, God-centred family, committed to sharing His life-giving power

## OUR VALUES:

- *Faith – glorifying God, empowered by the Spirit through prayer and Bible study*
- *Mission – sharing the love and message of Christ in our community*
- *Integrity – demonstrating high biblical standards, doing what is pleasing to God whatever the cost*
- *Generosity – generously giving of our time, energy and resources*
- *Inclusion – accepting all and encouraging each person to achieve their God-given potential*

## MINISTER

[Please contact one of the Elders](#)

## CHURCH OFFICE (open 9am-12.30pm)

Lynn Edwards

01233 632739

[office@wbc-ashford.org.uk](mailto:office@wbc-ashford.org.uk)

## ELDERS

Ron Ashman

Keith Gwilym

Roger Whiteley

## DEACONS

Barry Casse (Worship)

Roger Edwards (Pastoral care)

Terry Golding (Youth)

Christine Ross (Administration)

Miles Moore (Prayer)

Robin Wise (Children)

Bernice Steele (Fabric)

Ben Smith

## PRAYER CHAIN

[prayer@wbc-ashford.org.uk](mailto:prayer@wbc-ashford.org.uk)

## PASTORAL CARE TEAM

Please call the Church Office

Find out more:

Website



Facebook

